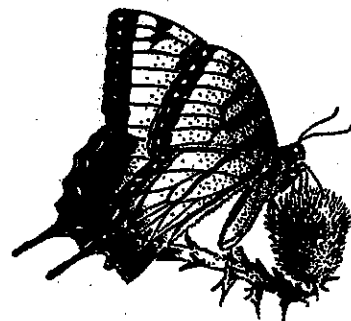




BUTTERFLY GARDENING

Butterflies are wonderful in the garden, flitting from flower to flower in search of nectar. They add natural beauty and activity, and are very valuable pollinators as well. Unfortunately, due to the destruction of natural habitat and the indiscriminate use of broad-spectrum pesticides, the butterfly population is in decline.

To attract butterflies to your garden, choose a sunny location that is protected from wind. Use plants of differing heights, colors, and bloom times to attract butterflies throughout the season. Grow larvae plants, as well, to encourage egg laying (list follows). Expect to see caterpillars munching on these plants. Enjoy them and let them eat all they want to! Make a puddle, if there are none nearby, by burying a shallow saucer filled with sand and water. Place a flat stone in the sun for basking. Provide undisturbed log piles and leaf litter in a hidden spot in the garden for shelter.



Limit the use of pesticides in your garden. Most are toxic to butterflies! Talk to our professionals at Merrifield Garden Center to learn how and when to use pesticides before you spray. *Please see our library for books about gardening and butterflies.*

PLANTS THAT ATTRACT BUTTERFLIES

PERENNIALS

<i>Achillea</i>	Yarrow	<i>Geranium</i>	Hardy Geranium
<i>Aconitum</i>	Monkshood	<i>Gaillardia</i>	Blanket Flower
<i>Alcea</i>	Hollyhock	<i>Gaura</i>	'Whorling Butterflies'
<i>Allium</i>	Onion	<i>Helianthus</i>	Swamp Sunflower
<i>Anemone</i>	Anemone	<i>Heliopsis</i>	Orange Sunflower
<i>Arabis</i>	Rockcress	<i>Hesperis</i>	Dame's Rocket
<i>Artemesia</i>	Wormwood	<i>Hemerocallis</i>	Daylily
<i>Asclepias</i>	Butterfly Weed	<i>Iberis</i>	Candytuft
<i>Aster</i>	Aster	<i>Kniphofia</i>	Red Hot Poker
<i>Astilbe</i>	Astilbe	<i>Lavandula</i>	Lavender
<i>Baptisia</i>	False Blue Indigo	<i>Liatris</i>	Gayfeather
<i>Boltonia</i>	White Boltonia	<i>Ligustrum</i>	Common Privet
<i>Buddleia</i>	Butterfly Bush	<i>Lillium</i>	Lily
<i>Campanula</i>	Bellflower	<i>Lobelia</i>	Cardinal Flower
<i>Caryopteris</i>	Blue Beard	<i>Lupinus</i>	Lupine
<i>Centaurea</i>	Cornflower	<i>Monarda</i>	Bee Balm
<i>Ceratostigma</i>	Plumbago	<i>Nepeta</i>	Catmint
<i>Centranthus</i>	Red Valerian	<i>Oenothera</i>	Sundrops
<i>Chrysanthemum</i>	Hardy Mum	<i>Penstemon</i>	Beardstongue
<i>Chelone</i>	Pink Turtleheads	<i>Potentilla</i>	Cinquefoil
<i>Coreopsis</i>	Tickseed	<i>Phlox</i>	Creeping & Summer
<i>Crocasmia</i>	Crocasmia	<i>Rosemarinus</i>	Rosemary
<i>Dianthus</i>	Sweet William	<i>Rudbeckia</i>	Black-eyed-Susan
<i>Dicentra</i>	Bleeding Heart	<i>Salvia</i>	Salvia
<i>Digitalis</i>	Foxglove	<i>Scabiosa</i>	Pincushion Flower
<i>Echinacea</i>	Purple Cone Flower	<i>Sedum</i>	Stonecrop
<i>Echinops</i>	Globe Thistle	<i>Solidago</i>	Goldenrod
<i>Eryngium</i>	Sea Holly	<i>Stokesia</i>	Stoke's Aster
<i>Eupatorium</i>	Joe Pye Weed	<i>Verbena</i>	Verbena

Veronica

Speedwell

Antirrhinum
Cosmos
Heliotropium
Hibiscus
Mallow
Impatiens
Lantana
Mimulus

Snapdragon
Cosmos
Heliotrope
Hardy Hibiscus, Rose
Impatiens
Lantana
Mimulus

ANNUALS

Nicotiana
Petunia
Salvia
Tagetes
Verbena
Viola
Zinnia

Flowering Tobacco
Petunia
Salvia
French Marigold
Verbena
Violet
Zinnia

Abelia
Althea
Azalea
Itea
Clethra
Rhododendron

Glossy Abelia
Rose-of-Sharon
Azalea
Sweetspire
Summersweet Clethra
Rhododendron

SHRUBS

Salix
Spirea
Syringa
Viburnum
Weigela
Yucca

Willow
Spirea
Common Lilac
Viburnum
Old Fashion Weigela
Yucca

Chionanthus
Cladastis
Laburnum

Fringetree
Yellowwood
Golden Rain Tree

TREES

Mimosa
Prunus
Vitex

Silk Tree
Cherry
Chaste Tree

Bignonia
Campsis
Clematis

Dragon Lady Crossvine
Trumpet Creeper
Clematis

VINES

Lonicera
Passiflora
Wisteria

Honeysuckle
Hardy Passion Vine
Wisteria

PLANTS BUTTERFLIES LAY EGGS ON AND/OR LARVAE FEED ON

PERENNIALS

Asclepias
Aster

Butterfly Weed/Milkweed
Aster

Hosta
Ornamental Grasses
Sedum

Plaintain Lily
Stonecrop

Daucus
Tagetes

Queen Anns Lace
French Marigold

ANNUALS

Trifolium
Viola

Clover
Violet

Lindera

Spicebush

SHRUBS

Vaccinium

Blueberries

Cornus
Liriodendron
Magnolia

Dogwood
Tulip Tree, Tulip Poplar
Magnolia

TREES

Prunus
Quercus
Sassafras

Cherry
Oak
Sassafras

Foeniculum

Fennel

HERBS

Petroselinum

Parsley

MERRIFIELD LOCATION

8132 Lee Highway, Merrifield, VA 22116

703-560-6222

FAIR OAKS LOCATION

12101 Lee Highway, Fairfax, VA 22030

703-968-9600

www.merrifieldgardencenter.com

Top Twenty Plants To Attract Butterflies

Butterfly Bush 'Pink Delight'
Rose of Sharon (Single flowers)
Harlequin Glorybower
Milkweeds (Common, Swamp, or Butterfly Weed)
Verbena 'Brazilian Vervain'
Liatris 'Gay Feather'
Monarda 'Blue Stockings'
Bouncing Bet
Zinnias
Red Clover
Echinacea
Thistles 'Bull'
Shasta Daisy
Joe-Pye Weed
Alfalfa
Sunflowers (Larger flowering varieties)
Salvia 'May Night'
Tithonia
Honeysuckle 'Japanese'
Sweet Peas (Perennial)